

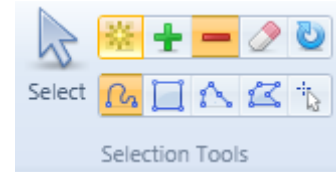
matix

CCI has recently introduced “Matix”, a new data visualization tool for the land records management industry. This new solution provides industry-leading power, flexibility, performance and ease-of use. Matix takes a novel “live integration” approach wherein all property data sets – including spatial, tabular, imagery and sketches – are live-joined via a common key. Each data type is presented in one or more “views” specifically tailored for the visualization and interaction tasks for that data type. Record selection and highlighting can take place intuitively in several of the view types. The selected and highlighted collections are immediately simultaneously reflected in the other views through automatic synchronization.

In a typical scenario, the user may be presented with a Map View and Data View. The Map View—powered by ESRI’s new [WPF/Silverlight mapping engine](#)—provides state-of-the art multi-layer map rendering, navigation and polygon selection. Within this view, the user can easily generate task-specific visualizations using [chloropleths](#), [bubble charts](#), and icon and text label overlays. These visualizations are organized as “themes” which are saved and presented in a gallery found in the Office-style ribbon available at the top of the application.

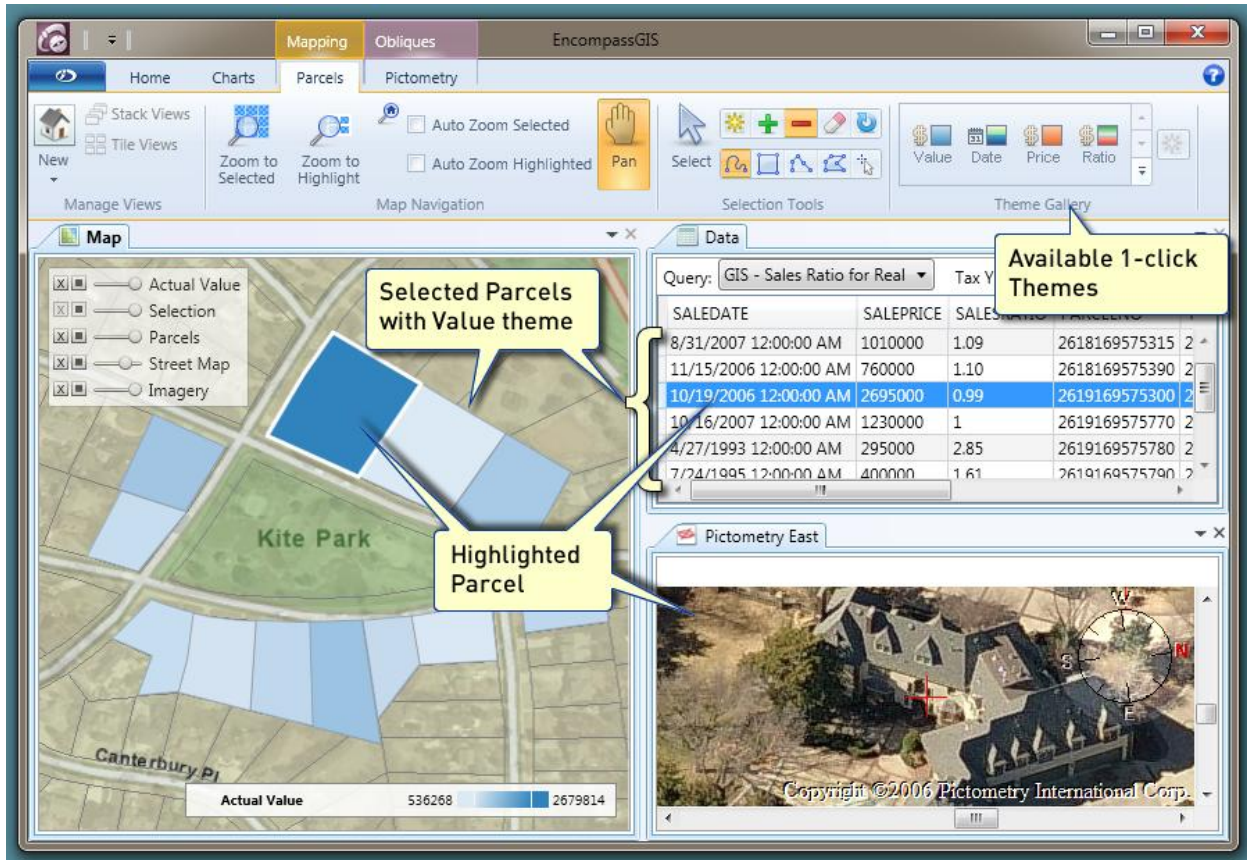
These views are contained within tabs which can be moved around on the screen. Tabs can be stacked or “torn off” for placement on a second monitor.

Using the ESRI-based mapping engine simplifies consumption of standard map services provided via ArcGIS Server or other sources. These map services enable full flexibility regarding layers and symbology presented within the Map View. Another strong benefit of the ESRI API is rich polygon selection support. Matix takes full advantage of this by way of the selection tools



found on the ribbon. With these tools, the user can easily create complex polygon selections on any layer supporting selection. The top row of tools provides a choice of selection mode: *new*, *add*, *remove*, *clear* and *continuous*. The second row provides a choice of selection region shapes: *freehand*, *rectangle*, *polyline*, *polygon* and *point*. In addition to these intuitive tools, the user can create selections based on intersections and buffers.

Matix supports polygon selection on any selection-enabled layer. Through layer selection Boolean operations, combined with buffer and radius selection, Matix fully addresses these requirements.



The Data View contains a powerful and flexible data grid. Here is where associated data for the selected polygons is shown. This could be assessment data, tax collection data or even gis attribute data coming from map service. Matix can easily import data through standard data provider's, file formats and services (SOAP and REST).

This data is automatically queried and presented whenever the polygon selection in the Map View changes. Furthermore, highlighting any row or rows in the data grid causes and immediate highlighting visualization (broad white border) to appear on the matching polygons in the Map View. This highlighting can further ripple through and synchronize any other open views, such as an Obliques view or a Photos View. Data providers for the Data View include but are not limited to CCI's own RealWare or Collectware. Additional supported providers include Excel, Oracle and SQL Server. Support for other standard RDBM's can easily be added.

Polygon selection and highlighting can be either directly controlled by the user within the Matix interface or Matix can be placed in a "follow me" mode where any record activity within RealWare (or other integrated product) is reflected by automatic pan and zoom within Matix.

At any time, an integrated program such as RealWare can retrieve the collection of selected parcels from Matix. Similarly, at any time any collection of records from an external application such as ListBuilder can be instantly viewed within Matix.

Selection is clearly indicated in the Map View with the Selection Layer polygons filled with a clearly identifiable pattern fill. The Data View is populated with associated data for the

selected polygons. Additionally, rows within the data grid can be highlighted creating a subset of polygons for further visualization in the other views.

MatixMobile, a portable device sister application to Matix, is powered via the ESRI WPF/Silverlight API and provides a mobile-optimized Matix experience, including GPS-enabled photo capture, routing, logging and much more.

Matix includes a community sharing feature which enables easily sharing map markups, screen layouts, save thematics and other useful user configurations.

Matix currently requires one server license for ArcGIS Standard or ArcGIS Advanced to serve all installed clients. Matix and MatixMobile both support [ArcGIS over Amazon EC2](#)

For further information, please contact:

Douglas Gennetten

Douglas.gennetten@coloradoCustomware.com

Software UX Architect / GIS Team Lead

970.222.4494

